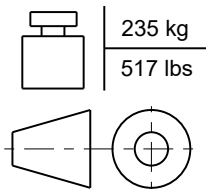
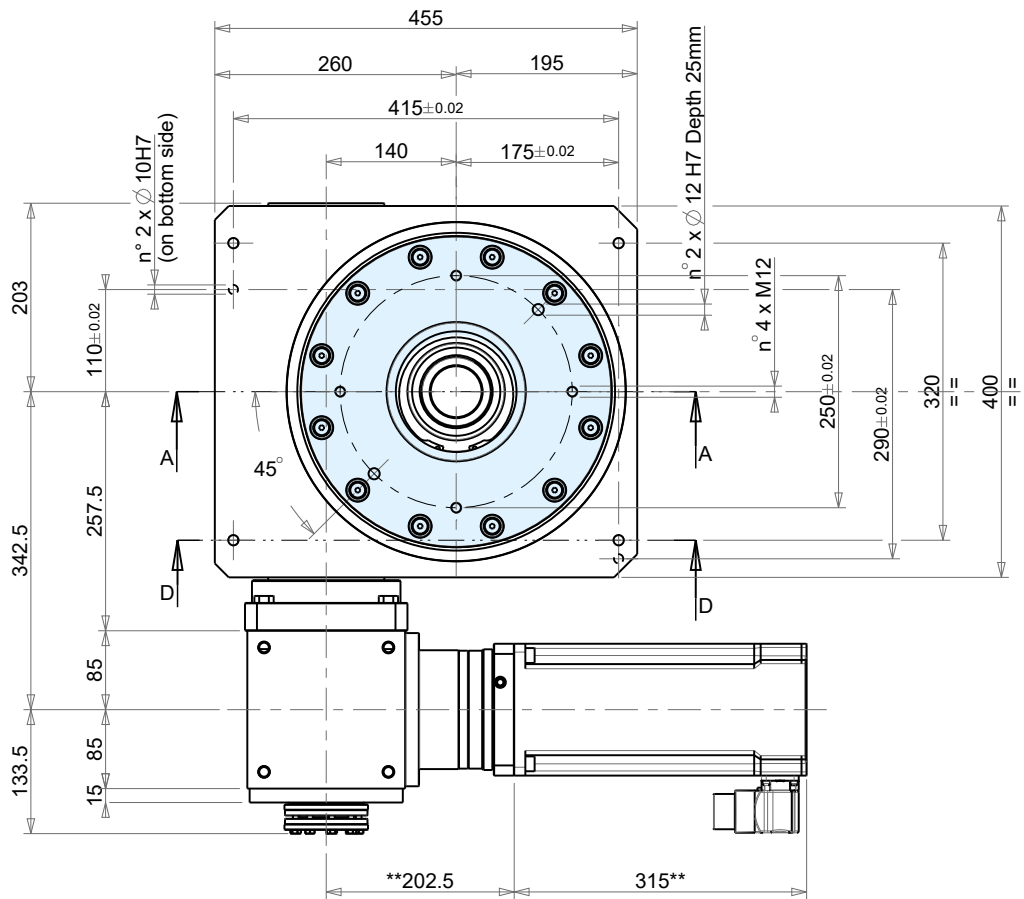
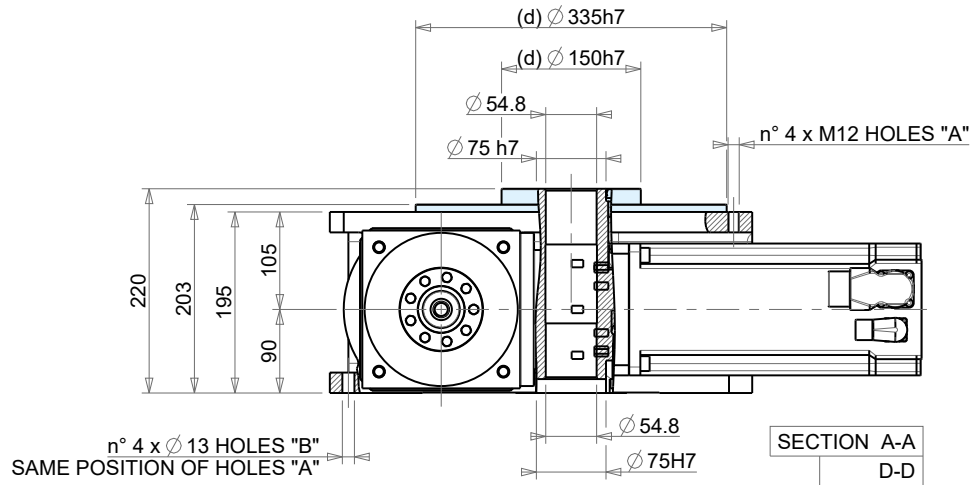




ITF-TRF

C024/1 - 04/2026

Rotating element • Elemento rotante • Drehelement • Élément tournant • Elemento de giro • 出旋轉元件



** = Dimension with servomotor Beckhoff - AM8563xx00

ITF 300	Reference Riferimento Bezug Référence Referencia 参考	Concentricity Concentricità Konzentrität Concentricité Concentricidad 同心度	Planarity Planarità Planheit Planéité Planaridad 平面度	Accuracy Precisione Teilgenauigkeit Précision Precisión 精度 Standard	Threaded holes position Posizione fori filettati Löcherposition Position des trou taraudé Posición orificios roscados 螺纹孔位置精度	Tolerance in compliance with Tolleranze secondo Toleranzen gemäß Tolérances selon Tolerancias con arreglo a 公差符合
	d	± 0.02 mm				UNI - ISO 2768-1 EN 22768-1
	D		± 0.02 mm			
	Rp			$\pm 0.008^{\circ}$		



Unit IT 300-12	
Total ratio	60 :1
Max. rotary diameter	2 400 mm
Max. output torque	1 032 N m
Max. Application Inertia	142.37 kg m ²
Internal inertia @ motor shaft	0.077362 kg m ²
t _{360°}	1.98 s
Max motor speed	3 000 min ⁻¹
Max acceleration	7.25 rad/s ²
Rated motor torque (max)	25.50 N m
Gearbox code	ATB-FC170 1:5 APEX
Servo code	AM8563-xQ00 Beckhoff

